

Home

Products

Support

Trade Shows

About Us

Contact Us

Product Reg

Find a Rep



**EVA+** is the first and only sensor to offer rounded top corners in all three planes, making it the most comfortable, ergonomically correct sensor on the market. Furthermore, EVA+ has added this comfort aspect without sacrificing image size or cutting corners like other systems. EVA+ has a full rectangular imaging area designed by limiting distance between the edge of the active imaging area and the physical contour of the capsule.

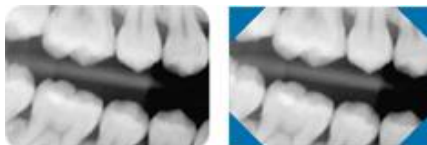
By careful three-dimensional design of the sensor capsule and its contents, EVA+ guarantees maximum patient comfort and permits correct positioning at the most distal parts of the oral cavity.

Avoid image distortions with EVA+. It's a more comfortable, ergonomically correct sensor that allows you to properly visualize and subsequently diagnose more effectively.



## Comfortable, Accurate, and Affordable

How comfortable is EVA+? The most critical aspect is positioning (especially for size #2) at the upper molars, where the upper corners of sensors push against the patient's palate causing discomfort and gagging. Hence, comfort and ease of positioning are significantly improved by rounding the two upper corners where the sensor may press against the palate, as opposed to having thin wedge-like corners.



With the EVA+ imaging chip, there are no clipped corners, unlike the competition (blue corners indicate lost image area in competitors' products).

Others claim to have the same roundness, however, these competing products achieve corner roundness by clipping the corners of the imaging chip, and consequently of the resulting image.

EVA+ is comfortable, accurate, and complete with the maximized image area you and your patients need.

Additionally, the interface now supports USB 2.0 so "hot-swapping" or the ability to jump from operator to operator. USB 2.0 automatically will detect the EVA+ sensor, and display images in seconds.

